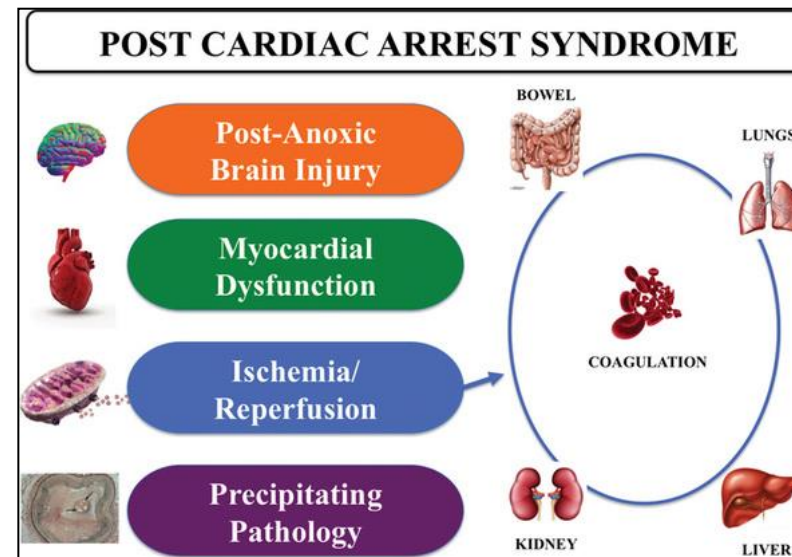


A large iceberg with a sharp peak and smaller icebergs in the foreground, set against a cloudy sky.

Target Temperature Management

Claudia Schrag

All we need is... ROSC ???...



Target Temperature Management

The New England Journal of Medicine

Copyright © 2002 by the Massachusetts Medical Society

VOLUME 346

FEBRUARY 21, 2002

NUMBER 8



MILD THERAPEUTIC HYPOTHERMIA TO IMPROVE THE NEUROLOGIC
OUTCOME AFTER CARDIAC ARREST

THE HYPOTHERMIA AFTER CARDIAC ARREST STUDY GROUP*

TREATMENT OF COMATOSE SURVIVORS OF OUT-OF-HOSPITAL CARDIAC
ARREST WITH INDUCED HYPOTHERMIA

STEPHEN A. BERNARD, M.B., B.S., TIMOTHY W. GRAY, M.B., B.S., MICHAEL D. BUIST, M.B., B.S.,
BRUCE M. JONES, M.B., B.S., WILLIAM SILVESTER, M.B., B.S., GEOFF GUTTERIDGE, M.B., B.S., AND KAREN SMITH, B.Sc.

The NEW ENGLAND JOURNAL of MEDICINE

ORIGINAL ARTICLE

Targeted Temperature Management at 33°C versus 36°C after Cardiac Arrest

Nielsen, NEJM 2013; 369: 2197



HYPOTHERMIA OR NORMOTHERMIA

Improving evidence based care in cardiac arrest





ttm – bei wem?

ttm – was ist die Zieltemperatur?

ttm – wann beginnen?

ttm – wie kühlen?

ttm – wie lange?

ttm – Fieberkontrolle danach?

Target Temperature Management

Resuscitation 95 (2015) 202–222

TTM is *recommended*:

- Adults after *OHCA with an initial shockable rhythm* who remain unresponsive after ROSC.

Strong recommendation, low-quality evidence

TTM is *suggested*:

- Adults after *OHCA with an initial non-shockable rhythm* who remain unresponsive after ROSC.

Weak recommendation, very low-quality evidence

- Adults after *IHCA with any initial rhythm* who remain unresponsive after ROSC

Weak recommendation, very low-quality evidence

Maintain a constant, target temperature between *32°C and 36°C*

Strong recommendation, moderate-quality evidence

It is suggested that the duration is at least *24 h*

Weak recommendation, very low-quality evidence